

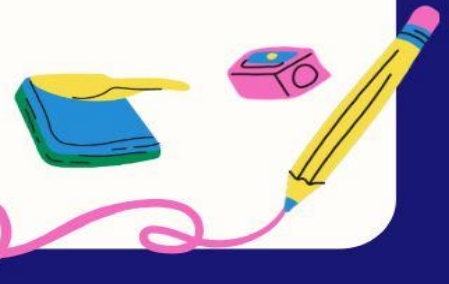


New Invention Infant School

Attendance Newsletter

February 2026

As always, thank you to our families for continuing to work with us to ensure that all children have the best possible attendance.



Punctuality Reminder

8:25

Gate opens for AM Nursery

8:35

Gate closes for AM Nursery

12:25

Gate opens for PM Nursery

12:35

Gate closes for PM Nursery

8:40

Gate opens for main school

8:55

Gate closes for main school.
Children are now late and must be signed in at the office with a valid reason given.

Phonics sessions start promptly at 9.00am for all main school children.



Reminder: Absence Procedures

Main School

Please inform the school office before 8:55am if your child will be absent from school.

- You may be asked to supply medical evidence.
- If you have not contacted school, Mrs Banks will contact you to find out the reason for absence.
- You will need to contact school every day that your child is absent, unless advised otherwise by Mrs Banks.

Nursery

Please inform the school office before 9am for AM and 30 hour children, by and 1pm for PM children if your child will be absent from Nursery.

- You will need to contact the school every day that your child is absent.



Contact Information

Phone: 01922 710871

Email: postbox@invention-i.walsall.sch.uk

Attendance Lead: Mrs E Banks

Absences So Far This Academic Year

Main School - Number of days of learning lost to:

Holidays - 167

Illness - 706

Other unauthorised - 105

Medical appointments - 52

Late marks - 502

Nursery - Sessions of learning lost to:

Holidays - 87

Illness - 354

Other unauthorised - 23

Medical appointments - 9

Late marks - 158

Honesty and Integrity

Being open and honest about your child's absences—including holidays—is key to building trust and supporting their learning. Clear communication helps us keep accurate records, plan for missed work, and offer the right emotional support when they return.

Appointments

We kindly ask for your support in ensuring that pupil learning time is protected. Please arrange medical, dental, and other appointments outside of school hours wherever possible - either after school or during the school holidays.

We understand that some appointments are unavoidable, but frequent absences during lessons can disrupt your child's progress and the rhythm of the school day. By scheduling appointments outside of school hours, you help us maintain continuity and give your child the best chance to thrive and learn.

Latest Updates

New Invention Infant School are excited to announce their participation in the *Inclusive Attendance Programme*, recently launched by Walsall Council.

Although we are in the early stages of the programme, the following changes have already been implemented.

Attendance Newsletters will be sent out each half-term. These will be sent via email so please ensure your details are kept up-to-date with the school office to avoid missing important updates.

Certificates for 100% and excellent attendance will also be sent via email to parents.

Certificates for improved punctuality or attendance will be awarded to children in-school.

Please look out for further updates on the next Attendance Newsletter.

